

DOYON CAMP 2 (DC2)

(11/15/20)

DC2 is an arctic grade mobile self-contained housing camp, that consists of two main trailered units. It is equipped with 61 total beds (5 single status rooms / 28 dual status rooms), 2 offices, meeting room, rec area, and a full kitchen with dining area. The camp also comes with a Utilities complex that houses the power generation for the Camp. The specifications for this camp are as follows:

Camp – 1st Floor

- 1 ea. - office for drilling foreman
- 1 ea. - office area for rig supervisor
- 1 ea.- drilling foreman room with private toilet, shower, sink, and desk.
- 1 ea. - rig supervisor room with private toilet, shower, sink, and desk.
- 1 ea. - directional engineer room with private toilet, shower, sink, and desk.
- 1 ea. – coffee/break room
- 1 ea. - mud room with lockers
- 1 ea. - common use bathroom with toilet, urinal, and sink
- 1 ea. - dining room
- 1 ea. - complete kitchen with stove hood fire protection system
- 1 ea. - freezer, cooler, and food storage area
- 1 ea.- cook quarters with private toilet, sink, shower and desk.
- 1ea. - heat, fire detection, and H2S system monitor station

Camp – 2nd Floor

- 9 ea. - 2 bed, rooms with closets and desks
- 1 ea. - 1 bed, room with closet, desk and shower
- 1 ea. - theater room
- 1 ea. - general recreation room
- 2 ea. - common use bathrooms with shower, toilet and sink
- 1 ea. - laundry room with washers, dryers, and sink.

- 1 ea. - general storage room

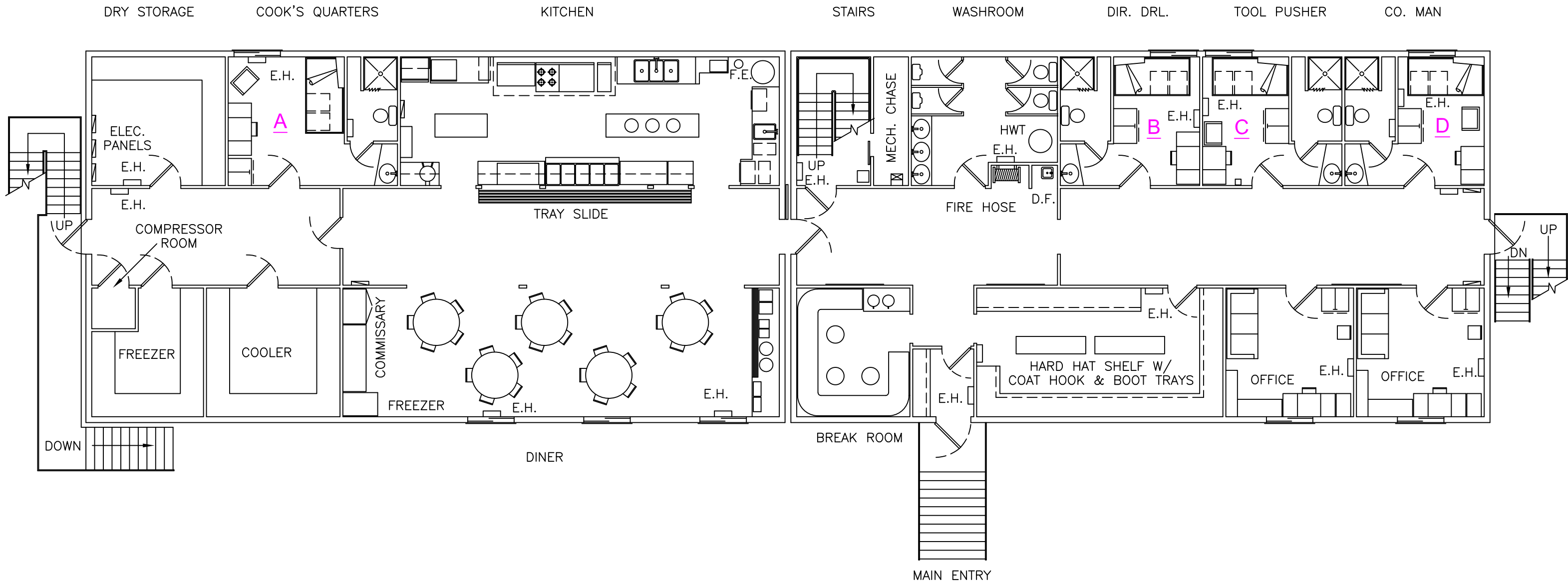
Camp – 3rd Floor

- 1 ea. - 1 bed, room with closet and desk
- 18 ea. - 2 bed, rooms with closet and desk
- 2 ea. - common bathroom with shower, toilet and sink
- 1 ea. - dry type sauna
- 1 ea. - general storage room

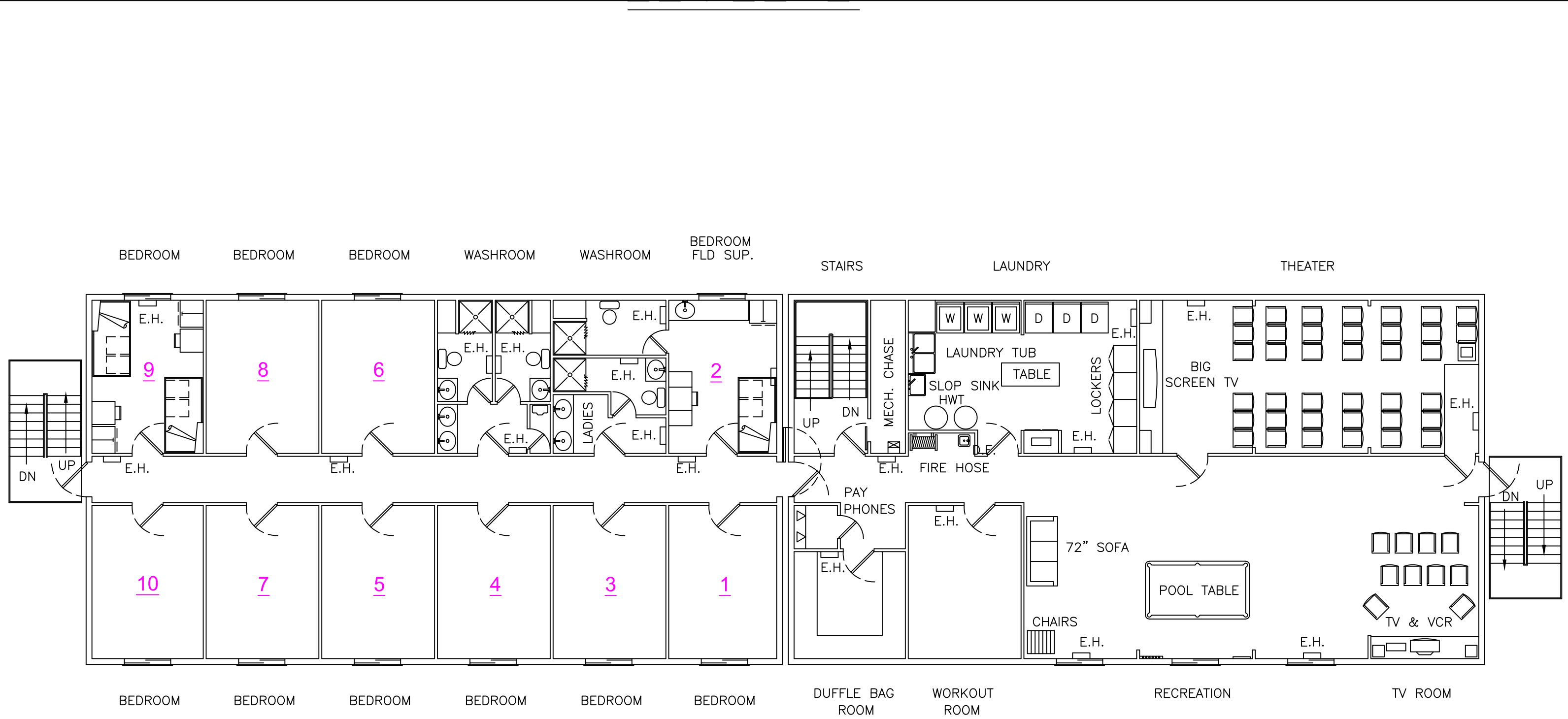
Camp - Utilities complex

- 1 ea. - 48ft x 42ft, heated SDU building
- 1 ea. - 15,000 gallon, double walled, aerated, heated, and insulated sewage holding tank
- 2 ea. - Cat C15, tier IV, generators rated at 455 kW each
- 1 ea. - 8000gal, double walled main fuel storage tank
- 1 ea. – 490gal, diesel day tank for C15 gens
- 1 ea.- 40gal, diesel day tank for cold start
- 1 ea. - main electrical distribution panel rated for 1000amp service.
- 2 ea. – 8000gal. potable water tanks with filters and pumps.

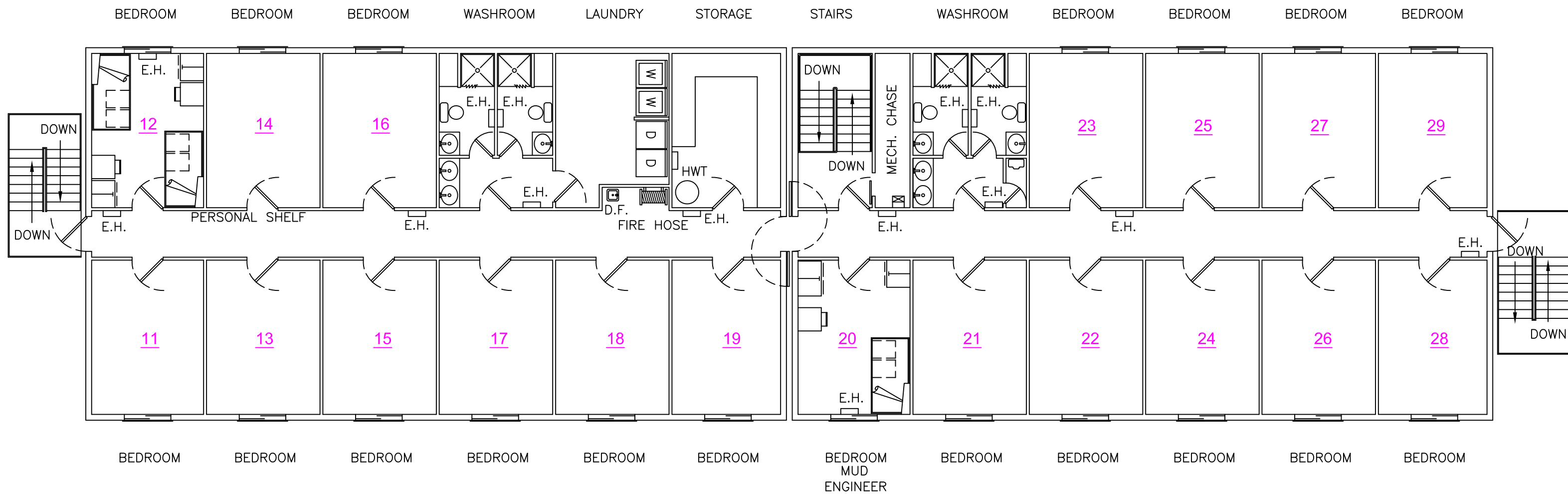




					THIS IS A PROPRIETARY DESIGN OF DOYON DRILLING. REPRODUCTION OR USE OF DESIGN IS PERMISSIBLE ONLY IF AUTHORIZED IN WRITING BY DOYON DRILLING.			
					DOYON			
					PROJECT DOYON DC2			
					TITLE CAMP LAYOUT LEVEL 1			
DATE		CHECKED BY		APPROVED BY		REV.		
SCALE NTS		DRAWN BY		DWG. NO.		SHT.		
DATE	REV. NO.	DWN. BY	APPR. BY	DESCRIPTION				



THIS IS A PROPRIETARY DESIGN OF DOYON DRILLING. REPRODUCTION OR USE OF DESIGN IS PERMISSIBLE ONLY IF AUTHORIZED IN WRITING BY DOYON DRILLING.				
DOYON				
PROJECT DOYON DC2				
TITLE CAMP LAYOUT LEVEL 2				
DATE	CHECKED BY	APPROVED BY	REV.	
SCALE NTS	DRAWN BY	DWG. NO.	SHT.	
DATE	REV. NO.	DWN. BY	APPR. BY	DESCRIPTION



THIS IS A PROPRIETARY DESIGN OF DOYON DRILLING. REPRODUCTION OR USE OF DESIGN IS PERMISSIBLE ONLY IF AUTHORIZED IN WRITING BY DOYON DRILLING.				
DOYON				
PROJECT DOYON DC2				
TITLE CAMP LAYOUT LEVEL 3				
DATE	CHECKED BY	APPROVED BY	REV.	
SCALE NTS	DRAWN BY	DWG. NO.	SHT.	
DATE	REV. NO.	DWN. BY	APPR. BY	DESCRIPTION