

DOYON CAMP 3 (DC3)

(2/9/23)

DC3 is an arctic grade mobile self-contained housing camp, that consists of two main trailered units. It is equipped with 61 total beds (5 single status rooms / 28 dual status rooms), 2 offices, meeting room, rec area, and a full kitchen with dining area. The camp also comes with a Utilities complex that houses the power generation for the Camp. The specifications for this camp are as follows:

Camp – 1st Floor

- 1 ea. - office area for drilling foreman
- 1 ea. - office area for rig supervisor
- 1 ea. - drilling foreman room with private toilet, shower, sink, and desk.
- 1 ea. - rig supervisor room with private toilet, shower, sink, and desk.
- 1 ea. - directional engineer room with private toilet, shower, sink, and desk.
- 1 ea. - coffee/break room
- 1 ea. - mud room with lockers
- 1 ea. - common use bathroom with toilet, urinal, and sink
- 1 ea. - dining room
- 1 ea. - complete kitchen with stove hood fire protection system
- 1 ea. - freezer, cooler, and food storage area
- 1 ea. – cook’s quarters with private toilet, sink, shower and desk.
- 1 ea. - heat, fire detection, and H2S system monitor station

Camp – 2nd Floor

- 9 ea. - 2 bed, rooms with closets and desks
- 1 ea. - 1 bed, room with closet, desk and shower
- 1 ea. – workout room
- 1 ea. – theater and training room
- 1 ea. - general recreation room

- 2 ea. - common use bathrooms with shower, toilet and sink
- 1 ea. - laundry room with washers, dryers and sink.
- 1 ea. - general storage room
- 1 ea. – supply room

Camp – 3rd Floor

- 1 ea. – single status room with closet and desk, Totco in this room
- 18 ea. – dual status rooms with closet sand desk
- 2 ea. - common bathroom with shower, toilet and sink
- 1 ea. - dry type sauna

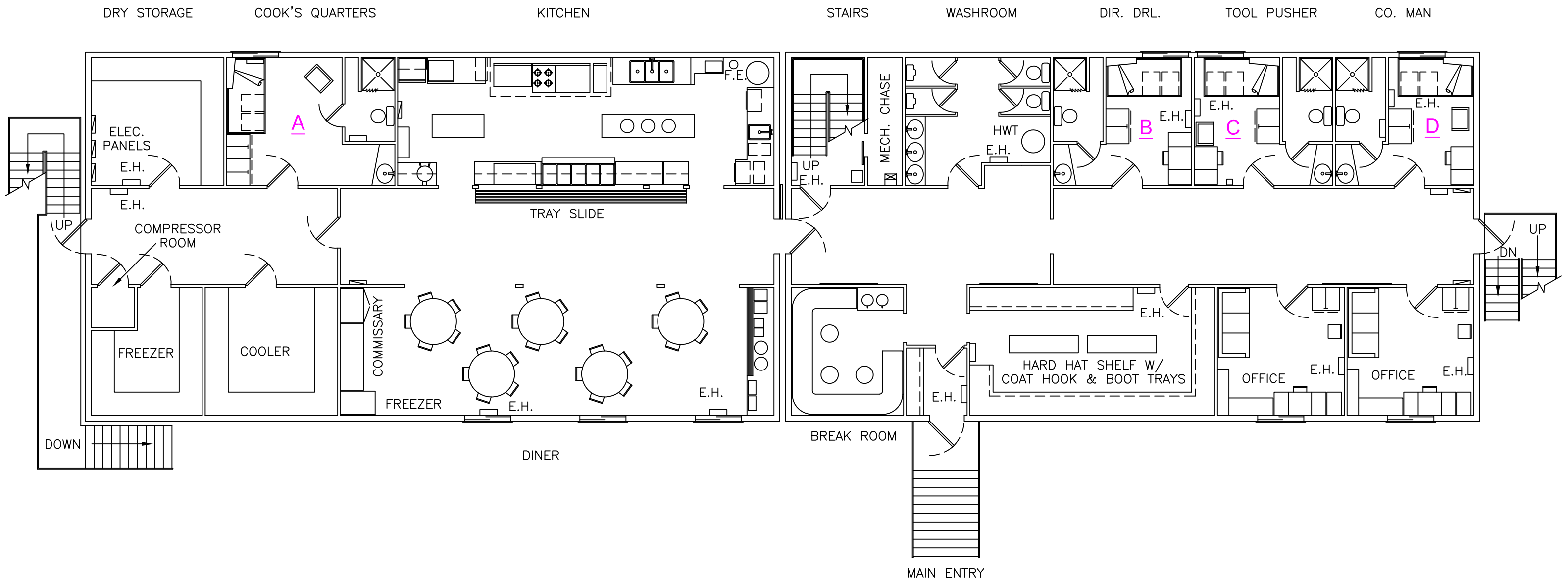
Camp - Utilities Complex

- 1 ea. - 48 ft x 42 ft, heated SDU building
- 1 ea. – 9400 gallon waste water holding tank that is double walled, insulated, and skid mounted.
- 2 ea. – Cat C15, 455 kW Generator Set
- 1 ea. - 6000 gallon, double walled fuel storage tank
- 1 ea. - main electrical distribution panel rated for 1000 amp service.
- 2 ea. - 8000 gallon, potable -lined water tank with filters and pumps.

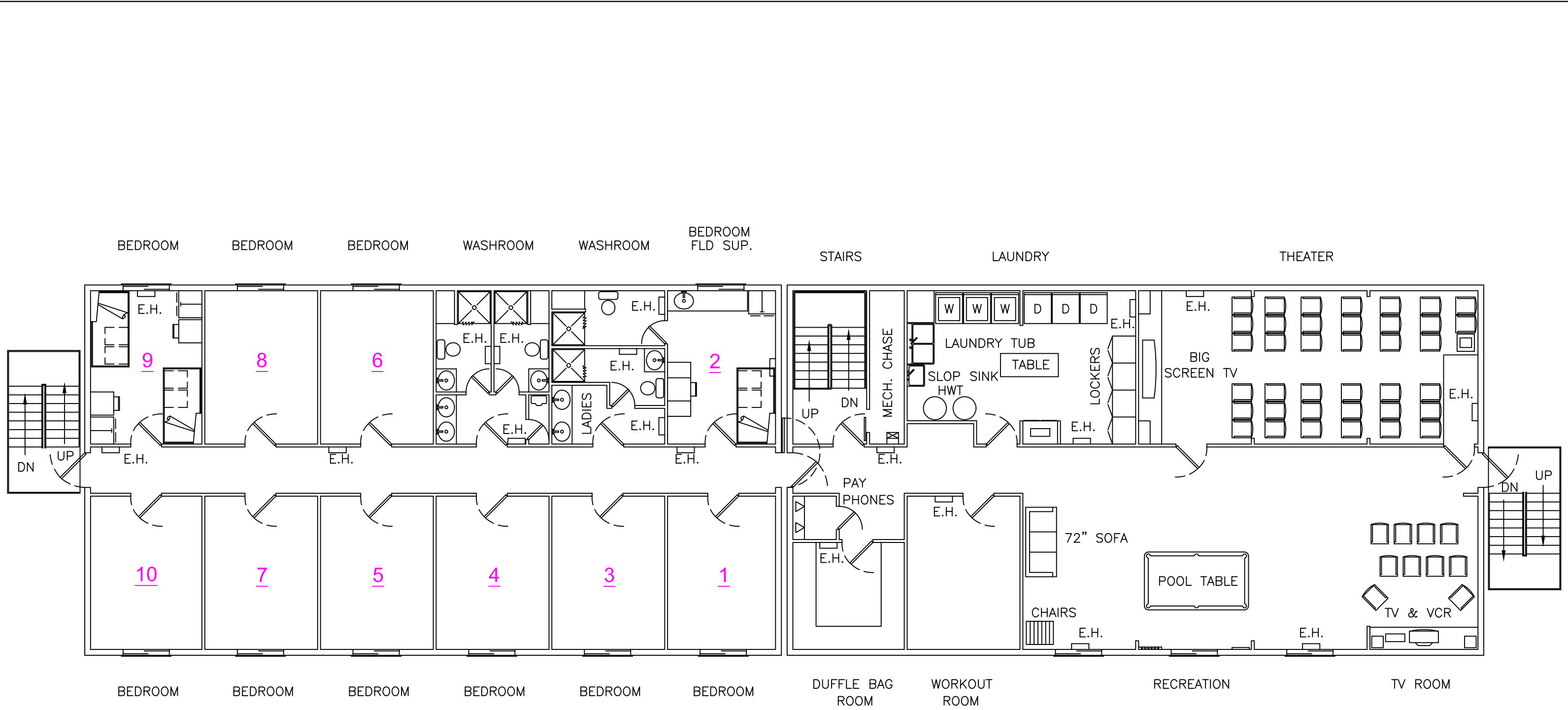
Shop (OPTION)

- 1 ea. - 61' x 31' mechanics shop with 15'-6" high ceiling and roll up door.
- 1 ea. - 3 ton overhead crane
- 1 ea. - Hydro blast parts washer system
- 1 lot - tools and equipment to support a rig workshop
- 1 ea. - storage area for parts and equipment

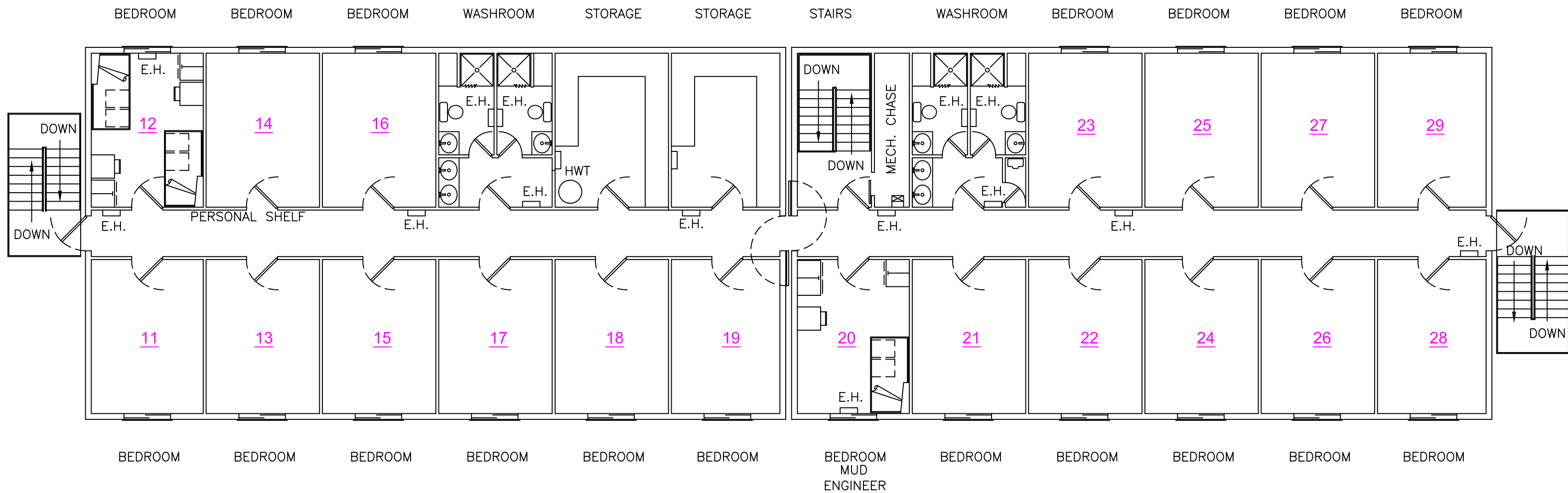




					THIS IS A PROPRIETARY DESIGN OF DOYON DRILLING. REPRODUCTION OR USE OF DESIGN IS PERMISSIBLE ONLY IF AUTHORIZED IN WRITING BY DOYON DRILLING.			
					DOYON			
					PROJECT DOYON DC3			
					TITLE CAMP LAYOUT LEVEL 1			
DATE		CHECKED BY		APPROVED BY		REV.		
SCALE	NTS	DRAWN BY	DM	DWG. NO.			SHT.	
DATE	REV. NO.	DWN. BY	APPR. BY	DESCRIPTION				



				THIS IS A PROPRIETARY DESIGN OF DOYON DRILLING. REPRODUCTION OR USE OF DESIGN IS PERMISSIBLE ONLY IF AUTHORIZED IN WRITING BY DOYON DRILLING.			
				DOYON			
				PROJECT DOYON DC3			
				TITLE CAMP LAYOUT LEVEL 2			
		DATE		CHECKED BY		APPROVED BY	
		SCALE NTS		DRAWN BY DM		DWG. NO.	
		DATE		REV. NO.		DWN. BY	
		APPR. BY		DESCRIPTION		SHT.	



					THIS IS A PROPRIETARY DESIGN OF DOYON DRILLING. REPRODUCTION OR USE OF DESIGN IS PERMISSIBLE ONLY IF AUTHORIZED IN WRITING BY DOYON DRILLING.			
					DOYON			
					PROJECT DOYON DC3			
					TITLE CAMP LAYOUT LEVEL 3			
		DATE		CHECKED BY		APPROVED BY		REV.
DATE	REV. NO.	DWN. BY	APPR. BY	DESCRIPTION		SCALE	DWG. NO.	SHT.
						NTS	DM	