

DOYON CAMP 4 (DC4)

(2/04/23)

DC4 is an arctic grade, mobile, self-contained housing camp, that consist of a single main trailered 3 story unit. It is equipped with 28 total beds (4 single status rooms / 12 dual status rooms), 2 offices, meeting room, rec area, and a full kitchen with dining area. The camp also includes a shop and power generation unit. The specifications for this camp are as follows:

Camp – 1st Floor

- 2 ea. - office areas
- 1 ea. - coffee room
- 1 ea. - locker room
- 1 ea. - common use bathroom with toilet, urinal, and sink
- 1 ea. - dining room
- 1 ea. - complete kitchen with stove hood fire protection system
- 1 ea. - freezer, cooler, and food storage area
- 1 ea. – cook’s quarters with private toilet, sink, shower and desk.
- 1ea. - heat, fire detection, and H2S system monitor station

Camp – 2nd Floor

- 1 ea. - drilling foreman room with private toilet, shower, sink, and desk.
- 1 ea. - toolpushers room with private toilet, shower, sink, and desk.
- 4 ea. - 2 bed, room with closets and desks
- 1 ea.- 1 bed, room with closet and desk
- 1 ea. - recreation room
- 2 ea. - common use bathrooms with shower, toilet and sink
- 1 ea. - laundry room with 2 washers, 2 dryers and sink.
- 1 ea. - general storage room

Camp – 3rd Floor

- 1 ea. - 1 bed, room with closet and desk
- 7 ea. - 2 bed, room with closets and desks
- 1 ea. - common bathroom with shower and sink
- 1 ea. - common bathroom with toilet and sink
- 1 ea. - general storage room

Sewage Complex

- 1 ea. - 12 ft x 38 ft, heated SDU building
- 1 ea. - 6,700 gallon, double walled, heated, and insulated sewage holding tank

Power Generation Complex

- 1 ea. - 12 ft x 46 ft heated complex for housing generator sets
- 2 ea. - Cat 15, 455 kW generator plants with electric starts, remote radiators, and automatic transfer start capability.
- 1 ea. - main electrical distribution panel rated for 1000 amp service.
- 2 ea. - potable water tanks with filters and pumps to provide potable water to the camp.
- 1 ea. - 5000 gallon, double walled fuel storage tank

Shop

- 1 ea. - 46 ft x 20 ft mechanics shop with a 16 ft high ceiling and roller door.
- 1 ea. - 3 ton overhead crane
- 1 ea. - Hydroblast parts washing unit
- 1 lot - tools and equipment to support a rig workshop

Auxiliary Camp Unit (OPTION)

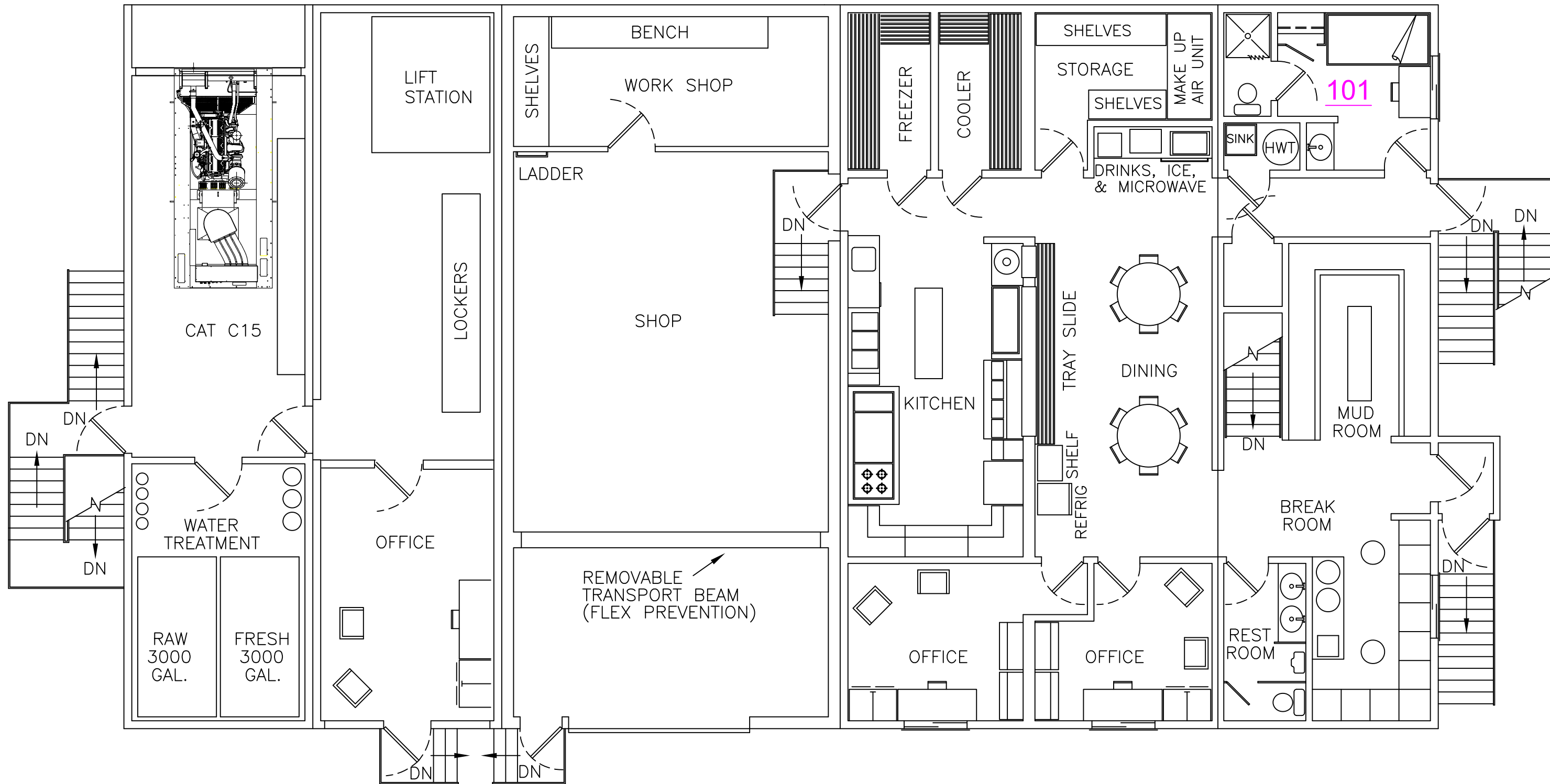
The auxiliary camp unit is a separate, tailorized building that contains the following:

- 4 ea. - 2 bed, rooms with closet and desk
- 2 ea. - common bathrooms with shower, toilet and sink

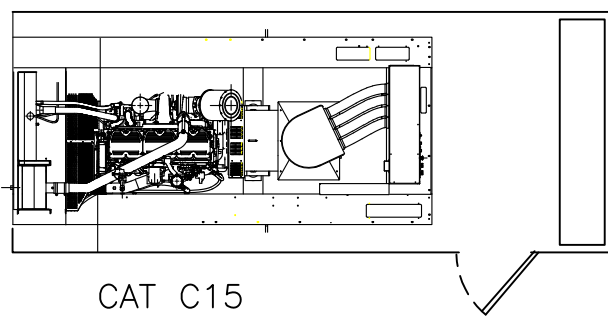
Break Room

- 1 ea.- 10' x 40' mobile break room
- Lavatory with 300 gallon water supply/ waste water storage
- 40 lockers with benches
- additional smoke room is available for rental



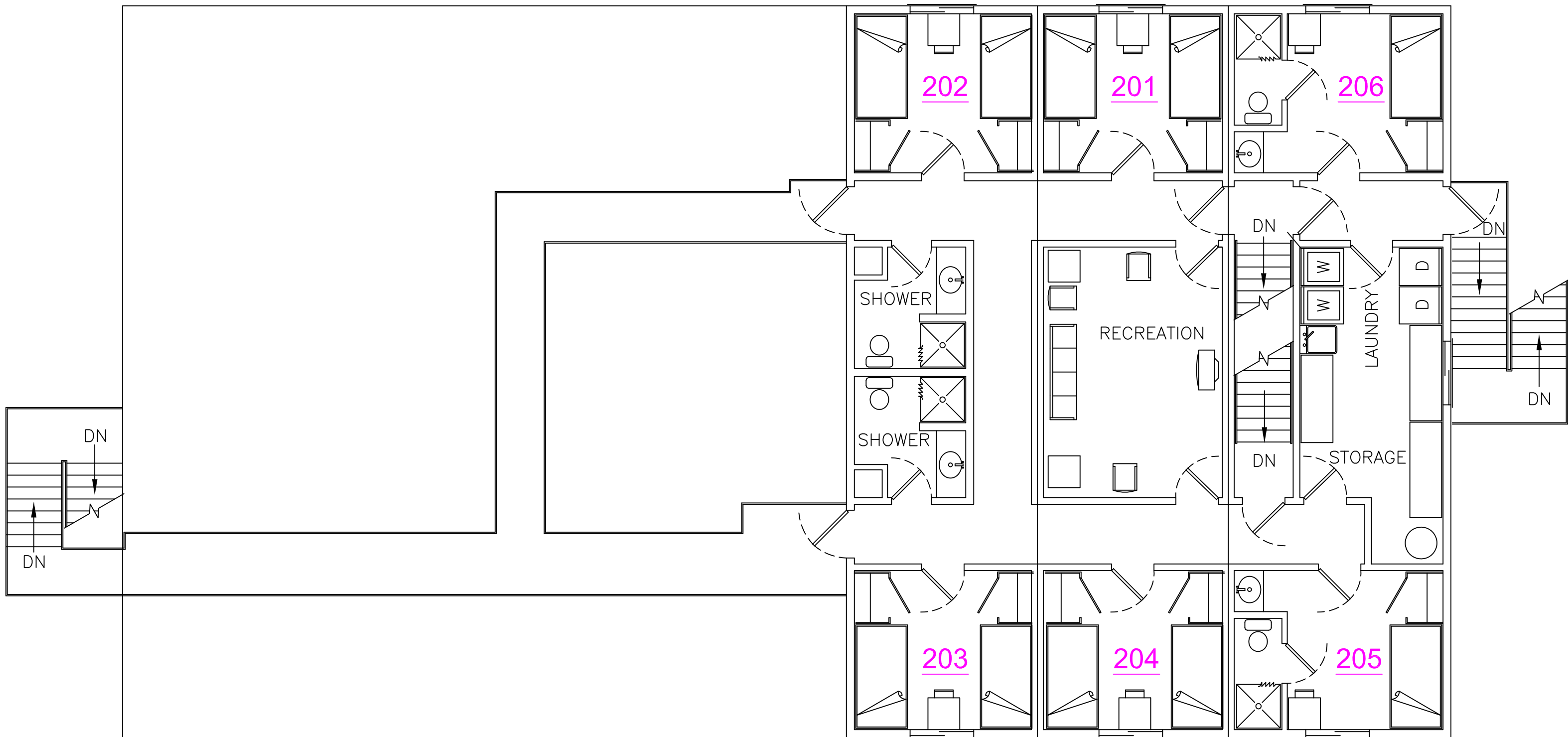


101

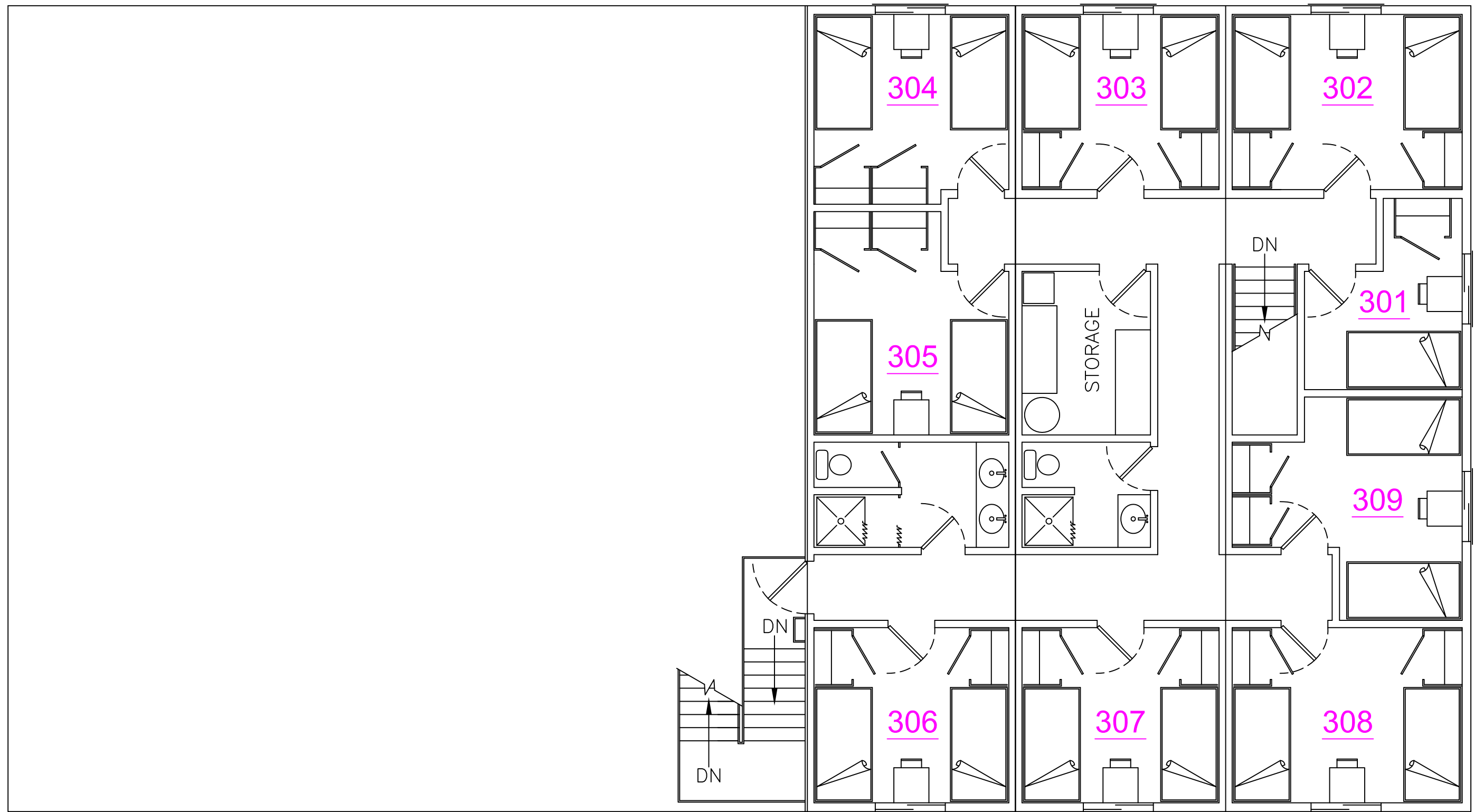


DATE	REV. NO.	DWN. BY	APPR. BY	DESCRIPTION

THIS IS A PROPRIETARY DESIGN OF DOYON DRILLING. REPRODUCTION OR USE OF DESIGN IS PERMISSIBLE ONLY IF AUTHORIZED IN WRITING BY DOYON DRILLING.			
DOYON			
PROJECT		DOYON DC4	
TITLE		CAMP LAYOUT LEVEL 1	
DATE	CHECKED BY	APPROVED BY	REV.
SCALE	DRAWN BY	DWG. NO.	SHT.
NTS	DM		



					THIS IS A PROPRIETARY DESIGN OF DOYON DRILLING. REPRODUCTION OR USE OF DESIGN IS PERMISSIBLE ONLY IF AUTHORIZED IN WRITING BY DOYON DRILLING.				
					DOYON				
					PROJECT DOYON DC4				
					TITLE CAMP LAYOUT LEVEL 2				
		DATE		CHECKED BY		APPROVED BY		REV.	
DATE	REV. NO.	DWN. BY	APPR. BY	DESCRIPTION		SCALE NTS	DRAWN BY DM	DWG. NO.	SHT.



					THIS IS A PROPRIETARY DESIGN OF DOYON DRILLING. REPRODUCTION OR USE OF DESIGN IS PERMISSIBLE ONLY IF AUTHORIZED IN WRITING BY DOYON DRILLING.			
					DOYON			
					PROJECT DOYON DC4			
					TITLE CAMP LAYOUT LEVEL 3			
					DATE	CHECKED BY	APPROVED BY	REV.
DATE	REV. NO.	DWN. BY	APPR. BY	DESCRIPTION	SCALE NTS	DRAWN BY DM	DWG. NO.	SHT.